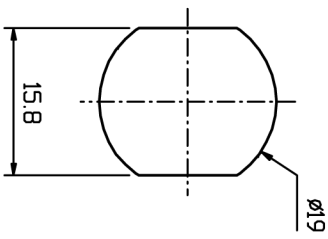
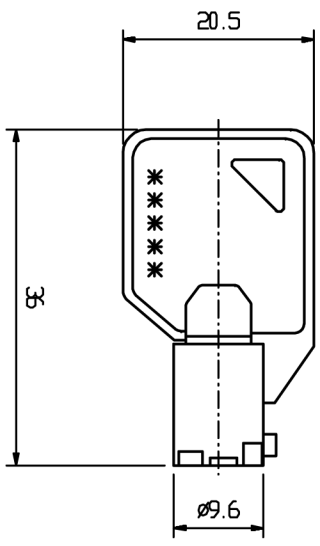


NOTES:

- \* Zinc alloy die cast housing and cylinder plated.
- \* Radial cylinder with 7 pin tumbler, Anti-Picking with wide range of key change, upon request, keyed all keys available.
- \* Steel made tubular keys, nickel plated.
- \* Silver plated contacts and terminals.
- \* 2 Positions (off-on) 4T terminals. (2NO, 2NC)
- \* 1 0000 combinations available.
- \* NUT x 2PCS.



Recommended hole size

REV. NO.	COORDINATES	WAS	NEW	DATE	BY	DATE	05.30.05	SCALE	2:1	UNIT	mm	WT.:	g	REV.:	A	DESCRIPTION	KEYLOCK SWITCH									
1																										
<p>TOLERANCES</p> <table border="1"> <tr> <td>&gt;6</td> <td>0.2</td> </tr> <tr> <td>&gt;30</td> <td>0.3</td> </tr> <tr> <td>&gt;120</td> <td>0.5</td> </tr> <tr> <td>&gt;315</td> <td>0.8</td> </tr> <tr> <td>&gt;1000</td> <td>1.2</td> </tr> </table>																	>6	0.2	>30	0.3	>120	0.5	>315	0.8	>1000	1.2
>6	0.2																									
>30	0.3																									
>120	0.5																									
>315	0.8																									
>1000	1.2																									
<p>APPROVED BY _____ CHECKED BY _____ DRAWN BY _____</p>																										
<p>大廣有限公司 DA KOANG CO., LTD.</p>																										
<p>PART NO. 5057C</p>																										
<p>MATERIAL .</p>																										
<p>NOTE .</p>																										