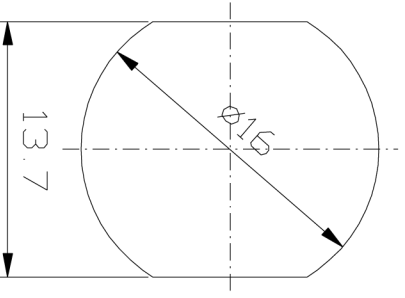
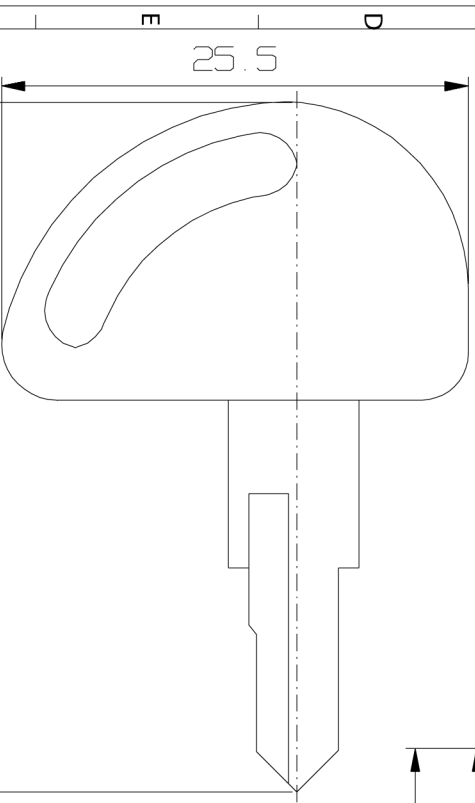


M16x1.5



NOTES:

- *Zinc alloy die cast housing, chrome plated.
- *Brass key, nickel plated, with plastic cover.
- *Silver plated contacts and terminals.
- *3 Positions (off-on-on) 60 index 3 Terminals.
- *Contact rating: 0.2A 12.5VAC.
- *10 Combinations available.

Recommended hole size

DATE: 09.29.06 SCALE: 4:1 UNIT: mm WT.: g REV.: A DESCRIPTION: KEYLOCK SWITCH

TOLERANCES	> 6	0.2						
	> 30	0.3						
	> 120	0.5						
	> 315	0.8						
	> 1000	1.2						
APPROVED BY	CHECKED BY	DRAWN BY	PART NO.	5058	MATERIAL	NOTE		
大廣有限公司 DA KWANG CO., LTD.								

REV. NO.	COORDINATES	WAS	NEW	DATE	BY
1					